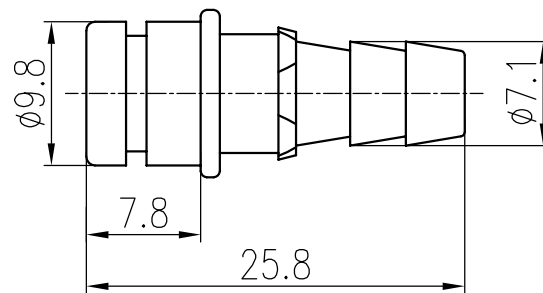
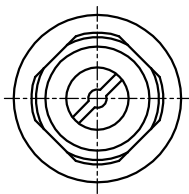


日期/Date  
 档案员  
 Filing Clerk

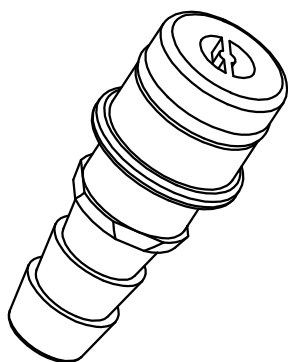



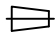

技术参数:

- 材料: 聚甲醛
- 颜色: 黑色
- 软管内径: 6.0mm/ 1/4"
- 工作压力: 最大 8 bar/116 psi
- 密封圈材料: 氟橡胶
- 可插拔次数: >500

Technical specification:

- Material: delrin acetal
- Colour: black
- Tube termination:  
Internal diameter(ID)6.0mm/ 1/4"
- Working pressure: up to 8 bar/116 psi
- Sealing material: FPM
- Mating cycles: >500



					表面处理 Finish	-			图号 Drawing No.	-	
					材料 Material	-			产品代号 Part Code	PCM-6.0	
标记 Mark	处数 Number	变更描述/Description		签名 Signature		日期 Date	-			产品料号 Part No.	1011000010004
	姓名/Name	日期/Date		姓名/Name	日期/Date	比例 Scale	版本 REV.	重量 Weight	数量 Qty.	产品名称 Part Name	-
绘图 Drawn	BQ LUO	18.10.2010	标准化 Stand.	-	-	2:1	V1.0	1.4g	-		
审核 Checked	P RAO	18.10.2010									
工艺 Process	-	-	批准 Approved	YY LIN	18.10.2010	  All Dimensions in mm Original Size DIN A 4			 厦门唯恩电气有限公司 XIAMEN WAIN ELECTRICAL CO.LTD		